



Orange County Convention Center  
Orlando, Florida

## RAPIDRAC **G10**

NEW LOWER PRICING

See Page 6



SOLARMOUNT   SOLARMOUNTi   SOLARMOUNT-E   SUNFRAME   RAPIDRAC G10   UNIRAC LARGE  
ARRAY (U-LA)

# MASTER **PRICE LIST**

# Contents

SOLARMOUNT-E .....	1
Unirac Digital Advantage .....	2
Rail and Mounting Systems. ....	3
Module Mounting. ....	8
Accessories. ....	12
Roof Attachments .....	21

## Introduction

Thank you for choosing Unirac's PV mounting solutions.

Price and specifications are subject to change without notice. However, Unirac strives to maintain open communications with you, our most valued partner. In most cases, newsletters are sent out by e-mail 30 days in advance of any part number or pricing changes. Please make sure your server and/or e-mail software is set up to receive e-mails from any address at [unirac.com](mailto:marketing@unirac.com).

All prices are List Price. Contact your distributor for your actual pricing.

Unirac welcomes input concerning the accuracy and user-friendliness of this publication.

Please send any suggestions to [marketing@unirac.com](mailto:marketing@unirac.com).

## (E)ngineered Excellence & Ease

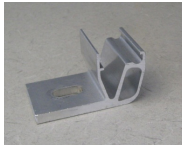
SOLARMOUNT-E has redefined what residential mounting systems can offer distributors and installers. With its installer inspired design, more intuitive attachments and a future-proof approach to engineering excellence. SOLARMOUNT-E makes it easy to support future codes and standards.



# SOLARMOUNT-E



Beam



1 Flange Foot



Retaining Splice



Leveling Gauge



End Clamp



Mid Clamp



Clip



Fixed Tilt Leg

**NOTE:** SOLARMOUNT-E is available only through Unirac Certified Distributors.

\*SME 3/8" Tilt Kits are used when mounting on stock Unirac 2-Piece Standoffs (See page 22). Other applications use 5/16" Tilt Kits.

Part No.	Description	Pkg Qty	Ship Wt. Lbs.	List Price Ea.
002010M	SME END CLAMP MILL 24-36.4MM	20	5	\$8.27
002011M	SME END CLAMP MILL 36.5-51MM	20	5	\$8.33
002105M	SME MID CLAMP MILL 24-38MM	20	5	\$4.60
002106M	SME MID CLAMP MILL 36.5-51MM	20	5	\$4.76
003002M	SME RETAINING SPLICE MILL	20	3	\$6.50
003004M	SME LEVELING GAUGE	20	5	\$7.00
003005M	SME/SM(I) CLIP MILL	20	3	\$1.15
003007M	SME BEAM POSITIVE STOP MILL	20	2	\$3.25
003006S	SME MODULE POSITIVE STOP	20	2	\$0.34
004009M	SME/SM(I) 1 FLANGE FOOT	20	7	\$7.50
007007M	SME 5/16" 7 IN FIXED TILT KIT*	1	2	\$20.80
007015M	SME 5/16" 15 IN FIXED TILT KIT*	1	4	\$25.97
007020M	SME 5/16" 20 IN FIXED TILT KIT*	1	6	\$29.18
007034M	SME 5/16" 34 IN FIXED TILT KIT*	1	8	\$37.97
006007M	SME 3/8" 7 IN FIXED TILT KIT*	1	2	\$20.80
006015M	SME 3/8" 15 IN FIXED TILT KIT*	1	4	\$25.97
006020M	SME 3/8" 20 IN FIXED TILT KIT*	1	6	\$29.18
006034M	SME 3/8" 34 IN FIXED TILT KIT*	1	8	\$37.97
008006S	SME UGC-3 BONDING CLIP	500	1	\$1.91
008007S	SME FIVE WIRE CLIP	500	1	\$0.57
012132M	SME BEAM 132" MILL	160	1240	\$57.42
012132M-B	SME BEAM 132" MILL 6PK	6	47	\$60.72
012168M	SME BEAM 168" MILL	160	1500	\$73.08
012168M-B	SME BEAM 168" MILL 6PK	6	67	\$77.25
012208M	SME BEAM 208" MILL	160	1960	\$90.48
012208M-B	SME BEAM 208" MILL 6PK	6	74	\$94.91
012240M	SME BEAM 240" MILL	160	2250	\$104.40
012240M-B	SME BEAM 240" MILL 6PK	6	84	\$110.40

Prices and specifications are subject to change without notice.

Page

1

SOLARMOUNT-E

# Unirac Smartphone Apps

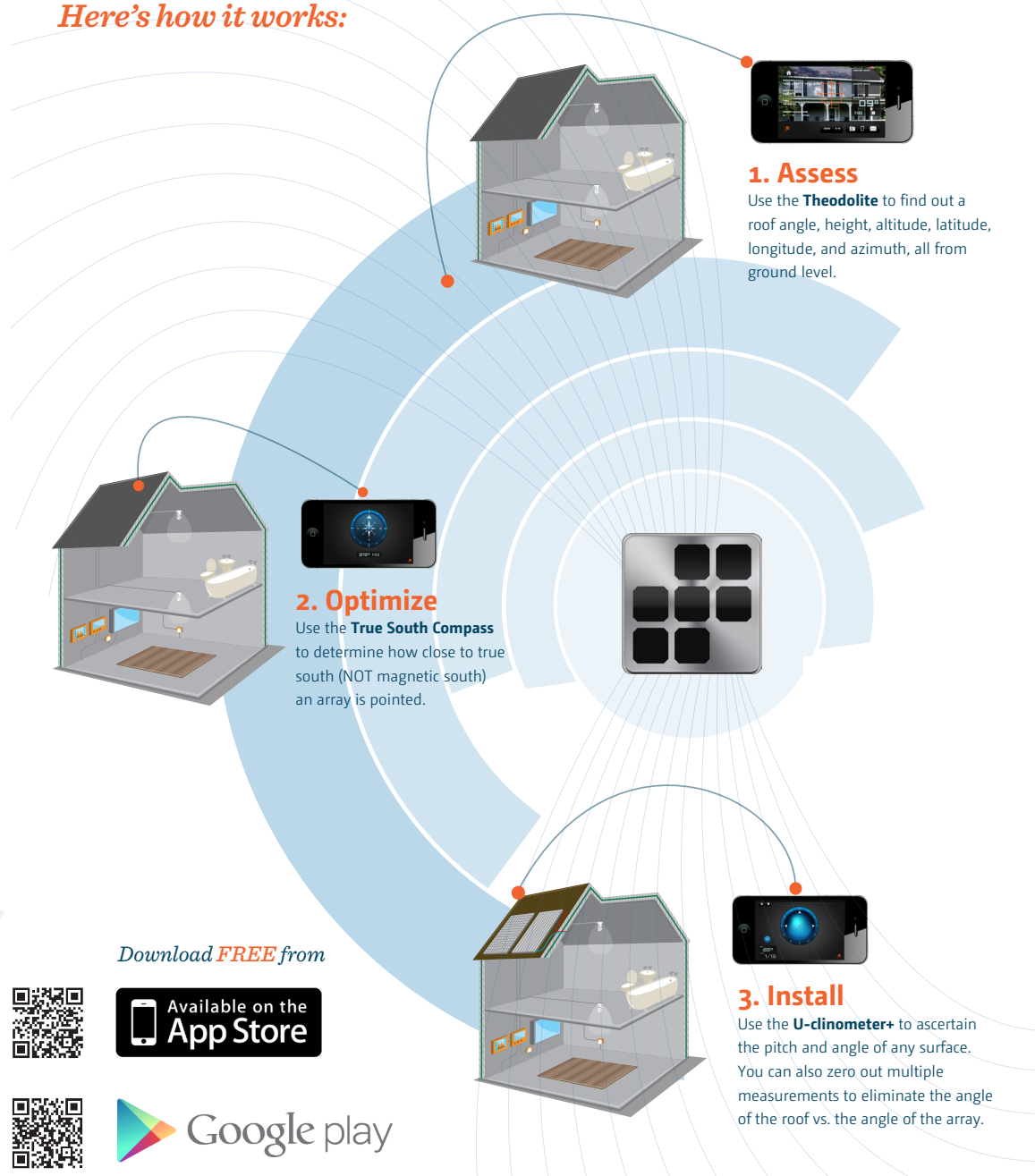
*Introducing*

## The Unirac TOOLBELT™

The Unirac Toolbelt is part of the Unirac Digital Advantage, giving you the tools to easily do business with us, anytime and anywhere.

The Unirac Toolbelt is available on the iPhone, iPod Touch, iPad, and Android platforms. It's a full suite of tools that any installer or distributor will find useful.

*Here's how it works:*



Download **FREE** from



Google play

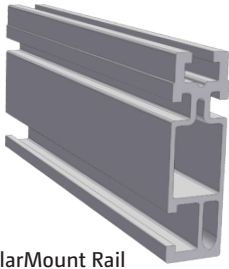
Unirac Digital Advantage

Prices and specifications are subject to change without notice.

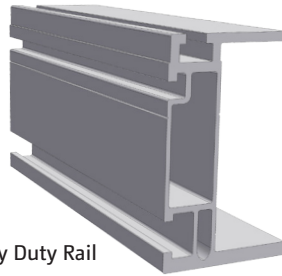
Page

2

# SOLARMOUNT

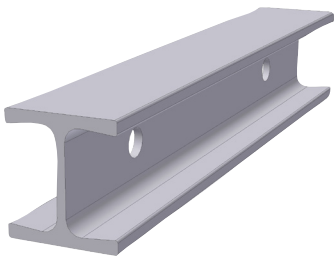


SolarMount Rail  
PAGE 4



SolarMount Heavy Duty Rail  
PAGE 4

# SOLARMOUNTi



SOLARMOUNTi 1.0 & 2.5 Rail  
PAGE 5

# SUNFRAME



SunFrame Shared Rail System  
PAGE 5

# RAPIDRAC G10

Ballast  
Frame  
(with or  
without  
module  
brackets)  
PAGE 6

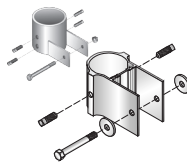


**NEW**

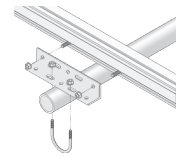
Now available in 5 degree and  
10 degree tilt options.

**LOWER PRICE**

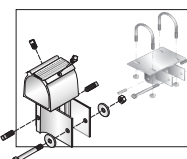
# U-LA



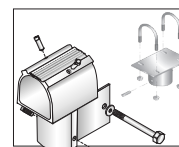
Slider—Aluminum  
(right) or steel options  
PAGE 7



Rail mounting  
bracket  
PAGE 7



Front leg cap — Aluminum  
(left) or steel options  
PAGE 7



Rear leg cap — Aluminum  
(left) or steel options  
PAGE 7

# Rail and Mounting Systems

Prices and  
specifications are  
subject to change  
without notice.

Page

3

See also SOLARMOUNT-E rail on page 1.



## SOLARMOUNT

### SolarMount® standard rails - DISTRIBUTOR PACK

Aluminum - Clear Anodized and Dark Bronze Anodized (BLACK)

CLR = Clear Anodized

DRK = Dark Bronze Anodized (BLACK)

Part No.	Description	Package Quantity	Ship Wt. Lbs.	List Price Ea.
310132C	SM RAIL 132" CLR	144	1184.00	\$72.00
310168C	SM RAIL 168" CLR	144	1504.00	\$92.00
310168D	SM RAIL 168" DRK	144	1504.00	\$107.00
310208C	SM RAIL 208" CLR	144	1819.00	\$112.00
310240C	SM RAIL 240" CLR	144	2213.00	\$132.00
310240D	SM RAIL 240" DRK	144	2213.00	\$158.00

### SolarMount® standard rails - ONE PACK = BUNDLE OF 8 RAILS

PRO-PAK: Standard rail bundles consist of 8 rails. Bundles listed here do not include L-feet or hardware.

CLR = Clear Anodized

Part No.	Description	Package Quantity	Ship Wt. Lbs.	List Price Ea.
310132C-B	SM RAIL 132" CLR	8	74.00	\$76.50
310168C-B	SM RAIL 168" CLR	8	96.00	\$96.25
310208C-B	SM RAIL 208" CLR	8	116.00	\$116.25
310240C-B	SM RAIL 240" CLR	8	130.00	\$134.63

### SolarMount® HD (heavy duty) rails - SPECIAL ORDER

Mill Finish aluminum

MILL = Mill Finish

Part No.	Description	Package Quantity	Ship Wt. Lbs.	List Price Ea.
410144M	SMHD RAIL 144" MILL	1	15.00	\$146.00
410168M	SMHD RAIL 168" MILL	1	17.00	\$166.00
410204M	SMHD RAIL 204" MILL	1	20.00	\$201.00
410240M	SMHD RAIL 240" MILL	1	25.00	\$235.00

See also SOLARMOUNT-Erail on page 1.

# SOLARMOUNTi

## SOLARMOUNTi® standard rails - MILL FINISH

Part No.	Description	Package Quantity	Ship Wt. Lbs.	List Price Ea.
010144M	SM-I 1.0 RAIL, 144" MILL	50	200.00	\$37.90
011144M	SM-I 2.5 RAIL, 144" MILL	20	130.00	\$52.65
011192M	SM-I 2.5 RAIL, 192" MILL	20	175.00	\$68.50

# SUNFRAME

## SunFrame rail

Select finish to match PV module frames.

CLR = Clear Anodized

DRK = Dark Bronze Anodized (BLACK)

Part No.	Description	Package Quantity	Ship Wt. Lbs.	List Price Ea.
210192C	SF RAIL 192", CLR	8	144.00	\$171.63
210192D	SF RAIL 192", DRK	8	144.00	\$197.63

# Rail and Mounting Systems

Prices and specifications are subject to change without notice.

Page

5

See also SOLARMOUNT-E rail on page 1.

## RAPIDRAC G10 LOWER PRICE

### RAPIDRAC G10 - SPECIAL ORDER

PRICING IS THE SAME FOR ALL RACKING FOR FRAMED MODULES

**Note:** See RapidRac Configuration Guide for help on configuring, laying out, and ordering a RapidRac.

Part No.	Description	Package Quantity	Ship Wt. Lbs.	List Price Ea.
310353-xxxx	RAPIDRAC, FRAME ONLY, 5 DEGREE TILT	1	8.00	\$59.00
	SPECIAL PRICING FOR ORDERS OF 101 PIECES OR MORE			\$54.00
310356-xxxx	RR ASSY, FRAME & BRKTS, 5 DEGREE TILT	1	12.00	\$137.00
	SPECIAL PRICING FOR ORDERS OF 201 PIECES OR MORE			\$132.00
310351-xxxx	RAPIDRAC, FRAME ONLY, 10 DEGREE TILT	1	8.00	\$59.00
	SPECIAL PRICING FOR ORDERS OF 101 PIECES OR MORE			\$54.00
310355-xxxx	RR ASSY, FRAME & BRKTS, 10 DEGREE TILT	1	12.00	\$137.00
	SPECIAL PRICING FOR ORDERS OF 201 PIECES OR MORE			\$132.00

### Now available in 5 degree and 10 degree tilt options!

We custom make RapidRac to the exact specifications of the module to be installed. Every RapidRac part number ordered from Unirac must have the correct four (4) digit suffix (replaces xxxx in the table above) as that is what identifies the module. *Unirac's website has the RapidRac suffixes for many modules at <http://www.unirac.com>, in the Technical Support section. Look for "RapidRac Part Number List (PDF)." In order to get those suffixes precisely correct, Unirac requires:*

The Unirac distributor to supply the applicable manufacturer's module data sheet at the time of placing the order. A Unirac contact will respond with the proper suffix to order, if not known in advance, or confirm the one chosen.

To repeat, **all RapidRac orders must be accompanied by a module data sheet commonly found at the module manufacturer's website.** We will manufacture your RapidRac to match the data sheet submitted to us, so be sure the correct one is supplied exactly.

See also SOLAR**MOUNT-E** rail on page 1.





## RAIL MOUNTING AND PIPE STRUCTURE COMPONENTS

Available to fit 2" inside-diameter pipe (in zinc-plated steel and mill-finish aluminum) and 3" inside-diameter pipe (zinc-plated steel only). Pipe is installer provided.

All braces and brackets are mill-finish aluminum.

AL = Mill-Finish Aluminum

STL = Zinc-Plated Steel

Part No.	Description	Package Quantity	Ship Wt. Lbs.	List Price Ea.
403200C	ULA BRACE, 2"@ 7 FT, AL	1	8.00	\$68.00
403201C	ULA BRACE, 2"@ 10.5 FT, AL	1	12.00	\$99.00
403202C	ULA BRACE, 2"@ 14 FT, AL	1	16.00	\$129.00
403203C	ULA BRACE, 2"@ 21 FT, AL	1	24.00	\$185.00
403210P	ULA PIPE CAP, 2", PLASTIC, GREY	1	1.00	\$1.07
403211C	ULA FRONT CAP, 2", AL	1	2.00	\$43.00
403211G	ULA FRONT CAP, 2", STL	1	4.00	\$71.00
403213C	ULA RAIL BRACKET, 2", AL	1	2.00	\$18.99
403214C	ULA REAR CAP, 2", AL	1	2.00	\$43.00
403214G	ULA REAR CAP, 2", STL	1	4.00	\$55.00
403215C	ULA SLIDER, 2", AL	1	2.00	\$20.48
403215S	ULA SLIDER 1 FLANGE, 2", STL	1	4.00	\$41.00
403216S	ULA THREADED FOOT, 2", STL	1	4.00	\$41.00

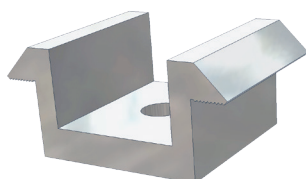
Part No.	Description	Package Quantity	Ship Wt. Lbs.	List Price Ea.
403301C	ULA BRACE, 3" @ 7 FT, AL	1	13.00	\$109.00
403302C	ULA BRACE, 3" @ 10.5 FT, AL	1	19.00	\$158.00
403303C	ULA BRACE, 3" @ 14 FT, AL	1	25.00	\$207.00
403311G	ULA FRONT CAP, 3", STL	1	5.00	\$100.00
403313G	ULA RAIL BRACKET, 3", AL	1	2.00	\$22.18
403314G	ULA REAR CAP, 3", STL	1	5.00	\$83.00
403315S	ULA SLIDER 1 FLANGE, 3", STL	1	4.00	\$69.00
403316S	ULA THREADED FOOT, 3", STL	1	5.00	\$89.00

Prices and specifications are subject to change without notice.

# SOLARMOUNT U-LA

SolarMount Clamps  
PAGE 10

U-LA Clamps  
PAGE 10



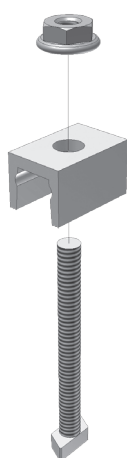
Mid clamp



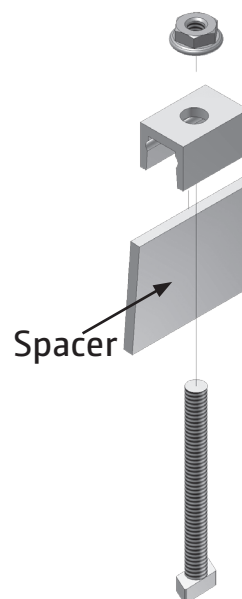
End clamp

**All Module Sizes,  
EXCEPT G & L**

In Size G, end clamps  
employ a spacer, but are  
otherwise identical to  
mid clamps.



Size G  
Mid clamp



Size G  
End clamp

Spacer

**Bottom mounting clip**



Clips for all modules  
with mounting holes in the  
back of the frame.



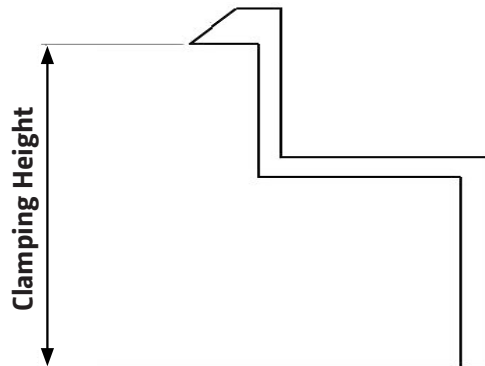
**Size L mounting  
clamp  
for Sanyo bifacial  
modules on shared  
SolarMount rail**  
Sanyo HIP/HIT xxx DA3  
Bifacial.

See also SOLARMOUNT-E clamps on page 1.

# SOLARMOUNT SOLARMOUNTi U-LA

## Top Mount Sizing

Unirac Letter	Module Thickness				Bolt Length			
	Millimeter		Inches					
A	24	-	26	0.94	-	1.02	2	
B	30	-	32	1.18	-	1.26	2	
C	34	-	36	1.34	-	1.42	2	
D	38	-	40	1.50	-	1.57	2	
K	39	-	41	1.54	-	1.61	2	
J	41	-	43	1.61	-	1.69	2 1/2	
F	45	-	47	1.77	-	1.85	2 1/2	
M	47	-	49	1.85	-	1.93	2 1/2	
E	50	-	52	1.97	-	2.05	2 1/2	
N	57	-	59	2.24	-	2.32	2 1/2	
H	Sanyo lipped modules						1 1/2	SolarMount only
G	Sharp lipped modules							SolarMount only



The measurement shown above is the clamping height of the end clamp. Refer to the module chart for the Unirac Letter designations that apply to various module heights.

## Module Mounting

Prices and specifications are subject to change without notice.

Page

9

# SOLARMOUNT U-LA

## TOP AND BOTTOM MOUNTING CLAMPS

CLR = Clear Anodized

DRK = Dark Bronze Anodized (BLACK)

W/HDW = Includes appropriate T-Bolts or Hex Head Bolts and Flange Nuts

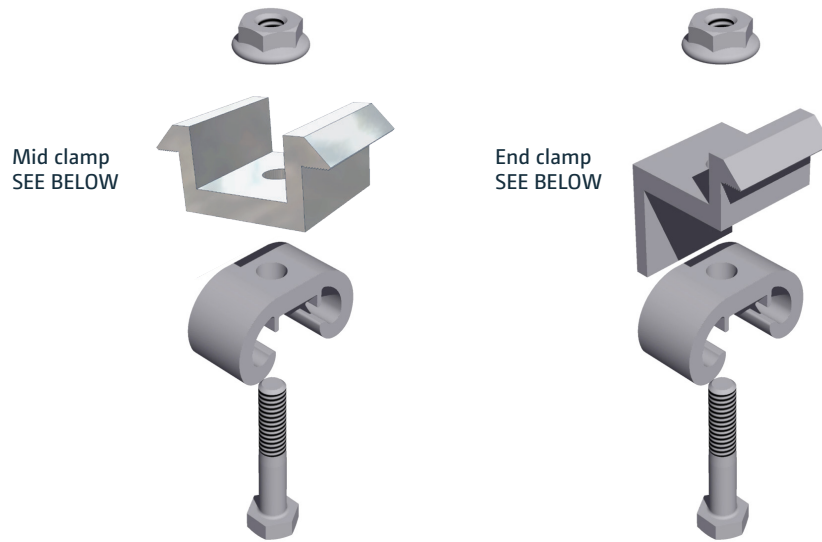
Part No.	Description	Package Quantity	Ship Wt. Lbs.	List Price Ea.
302001C	SM END CLAMP - SIZE A, W/HDW, CLR	20	4.00	\$2.22
302002C	SM END CLAMP - SIZE B, W/HDW, CLR	20	4.00	\$2.22
302002D	SM END CLAMP - SIZE B, W/HDW, DRK	20	4.00	\$2.87
302003C	SM END CLAMP - SIZE C, W/HDW, CLR	20	4.00	\$2.22
302003D	SM END CLAMP - SIZE C, W/HDW, DRK	20	4.00	\$2.87
302004C	SM END CLAMP - SIZE D, W/HDW, CLR	20	4.00	\$2.22
302004D	SM END CLAMP - SIZE D, W/HDW, DRK	20	4.00	\$2.87
302005C	SM END CLAMP - SIZE E, W/HDW, CLR	20	4.00	\$2.22
302005D	SM END CLAMP - SIZE E, W/HDW, DRK	20	4.00	\$2.87
302006C	SM END CLAMP - SIZE F, W/HDW, CLR	20	4.00	\$2.22
302006D	SM END CLAMP - SIZE F, W/HDW, DRK	20	4.00	\$2.87
302007D	SM END CLAMP - SIZE G, W/HDW, DRK	20	4.00	\$2.95
302008C	SM END CLAMP - SIZE J, W/HDW, CLR	20	4.00	\$2.22
302008D	SM END CLAMP - SIZE J, W/HDW, DRK	20	4.00	\$2.87
302009C	SM END CLAMP - SIZE K, W/HDW, CLR	20	4.00	\$2.22
302009D	SM END CLAMP - SIZE K, W/HDW, DRK	20	4.00	\$2.87
302010C	SM END CLAMP - SIZE L, W/HDW, CLR	20	4.00	\$3.80
302011C	SM END CLAMP - SIZE M, W/HDW, CLR	20	4.00	\$2.22
302012C	SM END CLAMP - SIZE N, W/HDW, CLR	20	4.00	\$2.22

Part No.	Description	Package Quantity	Ship Wt. Lbs.	List Price Ea.
302101C	SM MID CLAMP - SIZES ABCDK, W/HDW, CLR	20	4.00	\$2.48
302101D	SM MID CLAMP - SIZES ABCDK, W/HDW, DRK	20	4.00	\$3.42
302103C	SM MID CLAMP - SIZES EFJMN, W/HDW, CLR	20	4.00	\$2.48
302104D	SM MID CLAMP - SIZES EFJMN, W/HDW, DRK	20	4.00	\$3.42
302105D	SM MID CLAMP - SIZE G, W/HDW, DRK	20	4.00	\$3.55
302106D	SM MID CLAMP - SIZE H, W/HDW, DRK	20	4.00	\$3.55

Part No.	Description	Package Quantity	Ship Wt. Lbs.	List Price Ea.
302000C	SM BOTTOM MOUNT CLAMP W/HDW, CLR	20	3.00	\$1.30

See also SOLARMOUNT-E clamps on page 1.

# SOLARMOUNTi



# SOLARMOUNTi

## TOP MOUNTING CLAMPS

Includes Slider, Clamp, Hex Head Bolt, and Flange Nut.  
CLR = Clear Anodized

Part No.	Description	Package Quantity	Ship Wt. Lbs.	List Price Ea.
002001C	SM-I END CLAMP - SIZE A, CLR	20	2.00	\$2.77
002002C	SM-I END CLAMP - SIZE B, CLR	20	2.00	\$2.77
002003C	SM-I END CLAMP - SIZE C, CLR	20	2.00	\$2.77
002004C	SM-I END CLAMP - SIZE D, CLR	20	2.00	\$2.77
002005C	SM-I END CLAMP - SIZE E, CLR	20	2.00	\$2.77
002006C	SM-I END CLAMP - SIZE F, CLR	20	2.00	\$2.77
002007C	SM-I END CLAMP - SIZE J, CLR	20	2.00	\$2.77
002008C	SM-I END CLAMP - SIZE K, CLR	20	2.00	\$2.77
002009C	SM-I END CLAMP - SIZE M, CLR	20	2.00	\$2.77
002012C	SM-I END CLAMP - SIZE N, CLR	20	2.00	\$2.77

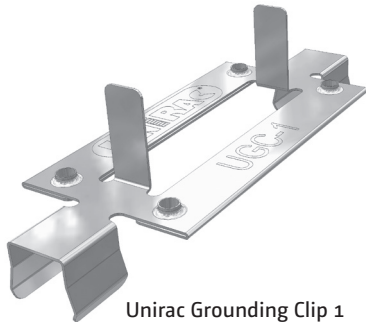
  

Part No.	Description	Package Quantity	Ship Wt. Lbs.	List Price Ea.
002101C	SM-I MID CLAMP - SIZE A, CLR	20	2.00	\$2.77
002102C	SM-I MID CLAMP - SIZES BC, CLR	20	2.00	\$2.77
002103C	SM-I MID CLAMP - SIZES D & K, CLR	20	2.00	\$2.77
002104C	SM-I MID CLAMP - SIZES EFJMN, CLR	20	2.00	\$2.77

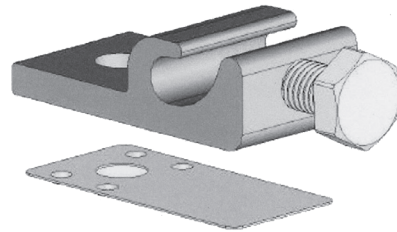
See also SOLARMOUNT-E clamps on page 1.

Prices and specifications are subject to change without notice.

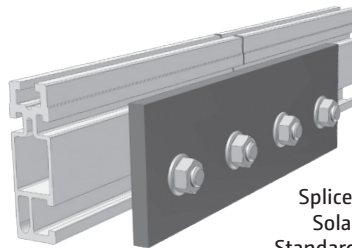
# SOLARMOUNT



Unirac Grounding Clip 1  
PAGE 13



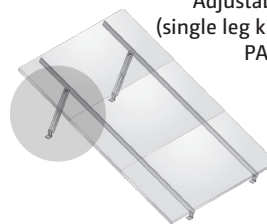
WEEB Grounding Lug  
PAGE 13



Splice Plate for  
SolarMount  
Standard and Heavy  
Duty Rail  
PAGE 13

## Also Available:

- Fixed Tilt Leg Kit  
SEE PAGE 13



Adjustable Tilt Legs  
(single leg kit - two shown)  
PAGE 13

Prices and  
specifications are  
subject to change  
without notice.

Page

12

See also SOLARMOUNT-E accessories on page 1.



# SOLARMOUNT

## SPLICE PLATE

Order one splice whenever two rail segments are to be joined into a single rail. See also SPLICE BARS on page 14.

Part No.	Description	Package Quantity	Ship Wt. Lbs.	List Price Ea.
303003C	SM SPLICE PLATE CLR	20	14.00	\$14.25

## GROUNDING HARDWARE

Part No.	Description	Package Quantity	Ship Wt. Lbs.	List Price Ea.
308001S	SM GROUND CLIP #1, UGC-1 SS,	20	1.00	\$2.29
008002S	GROUND WEEBLUG #1	20	2.00	\$10.00

## ADJUSTABLE TILT LEGS - SINGLE LEG KIT

Each leg contains a square tube, a strut insert, and fasteners.

Note that usable lengths are 2" less than stated because holes are drilled 1" from ends.

Part No.	Description	Package Quantity	Ship Wt. Lbs.	List Price Ea.
307107M	SM ADJ TILT LEG, 8-12", W/HDW	1	2.00	\$39.00
307115M	SM ADJ TILT LEG, 18-30", W/HDW	1	3.00	\$42.00
307120M	SM ADJ TILT LEG, 26-44", W/HDW	1	4.00	\$44.00
307134M	SM ADJ TILT LEG, 40-72", W/HDW	1	5.00	\$83.00

### NOTE - LOW PROFILE SOLUTIONS

Low profile solutions require the addition of two (2) L-foot for each leg. See page 25.

## FIXED TILT LEG KIT

Each leg kit contains fixed length leg and fasteners.

Note that usable lengths are 2" less than stated because holes are drilled 1" from ends.

Part No.	Description	Package Quantity	Ship Wt. Lbs.	List Price Ea.
307007M	SM FIXED TILT LEG, 7", W/HDW	1	1.00	\$15.75
307015M	SM FIXED TILT LEG, 15", W/HDW	1	2.00	\$19.95
307020M	SM FIXED TILT LEG, 20", W/HDW	1	2.00	\$22.58
307034M	SM FIXED TILT LEG, 34", W/HDW	1	3.00	\$30.00

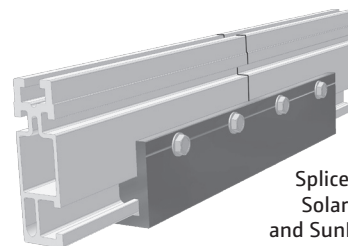
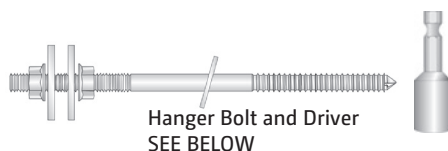
### NOTE - LOW PROFILE SOLUTIONS

Low profile solutions require the addition of two (2) L-foot for each leg. See page 25.

See also SOLARMOUNT-E accessories on page 1.

Prices and specifications are subject to change without notice.

# SOLARMOUNT SUNFRAME



Splice Bar for  
SolarMount  
and SunFrame Rail  
SEE BELOW

# SOLARMOUNT SUNFRAME

## HANGER BOLTS

Used in conjunction with L-feet, 8-inch hanger bolts support SolarMount rails above tile or corrugated metal roofs. A driver allows easy insertion into  $\frac{3}{16}$ -inch pilot holes in the rafters.

Part No.	Description	Package Quantity	Ship Wt. Lbs.	List Price Ea.
030021C	HDW HANGER BOLT $\frac{3}{8}$ ", W/HDW	20	5.00	\$10.75
030022C	HDW HANGER BOLT DRIVER $\frac{3}{8}$ "	1	1.00	\$23.63

## SPLICE BARS

CLR = Clear Anodized

DRK = Dark Bronze Anodized (BLACK)

Part No.	Description	Package Quantity	Ship Wt. Lbs.	List Price Ea.
303001C	SM & SF SPLICE BAR SERRATED CLR	20	10.00	\$5.90
303002D	SM & SF SPLICE BAR SERRATED DRK	20	10.00	\$6.20

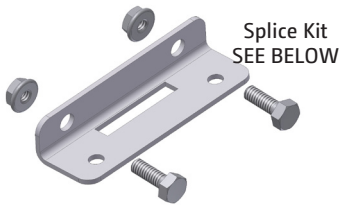
Prices and specifications are subject to change without notice.

Page

14

See also SOLARMOUNT-E accessories on page 1.

## SOLARMOUNTi



### Also Available:

- Enphase Mounting Kit SOLARMOUNTi only SEE BELOW

## RAPIDRAC G10



## SOLARMOUNTi

### SPLICE KITS

Available with and without WEEB 9.5 Grounding Solution

Part No.	Description	Package Quantity	Ship Wt. Lbs.	List Price Ea.
003000S	SM-I SPLICE KIT W/HDW	20	2.00	\$3.88
003001S	SM-I SPLICE KIT & GROUND W/HDW	20	2.00	\$7.76

### GROUNDING CLIPS & ENPHASE MOUNTING

20-pack will mount 10 Enphase Inverters

Part No.	Description	Package Quantity	Ship Wt. Lbs.	List Price Ea.
008005S	SMI GROUND CLIP, UGC-2, SS	20	1.00	\$2.30
008000C	SM-I ENPHASE MOUNTING KIT	20	2.00	\$2.58

## RAPIDRAC G10

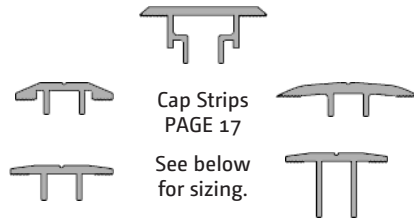
### GROUNDING CLIPS

Part No.	Description	Package Quantity	Ship Wt. Lbs.	List Price Ea.
008001S	GROUND CLIP, WEEB 9.5	20	1.00	\$2.25

See also SOLARMOUNT-E accessories on page 1.

Prices and specifications are subject to change without notice.

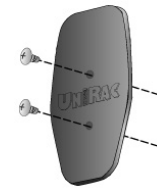
# SUNFRAME



Cap Strips  
PAGE 17

See below  
for sizing.

Screws sold  
separately -  
SEE PAGE 18



End Cap  
PAGE 18



SunFrame  
L-foot  
Adjusting  
Slider  
PAGE 18

# SUNFRAME

## Cap Strip and Screw Sizing

Unirac Letter	Module Thickness				Screw Length	
	Millimeter		Inches			
A	24	- 26	0.94 - 1.02		NOT AVAILABLE	
B	30	- 32	1.18 - 1.26		NOT AVAILABLE	
C	34	- 36	1.34 - 1.42		3/4"	
D	38	- 40	1.50 - 1.57		3/4"	
K	39	- 41	1.54 - 1.61		NOT AVAILABLE	
J	41	- 43	1.61 - 1.69		3/4"	
F	45	- 47	1.77 - 1.85		1"	
M	47	- 49	1.85 - 1.93		NOT AVAILABLE	
E	50	- 52	1.97 - 2.05		1-1/4"	
N	57	- 59	2.24 - 2.32		NOT AVAILABLE	
H & L	Sanyo lipped modules				H=3/4" L=1-1/2"	L= Bifacial ; H = All other Sanyo Lipped
G	Sharp lipped modules				1"	

**NOTE: Screws sold separately. See page 18.**

Prices and  
specifications are  
subject to change  
without notice.

Page

16

See also SOLARMOUNT-E accessories on page 1.

# SUNFRAME

## CAP STRIPS

CLR = Clear Anodized

DRK = Dark Bronze Anodized (BLACK)

NOTE: Screws sold separately. See page 18.

Part No.	Description	Package Quantity	Ship Wt. Lbs.	List Price Ea.
202001C	SF CAPSTRIP, 192", SIZE C, CLR	8	40.00	\$52.63
202001D	SF CAPSTRIP, 192", SIZE C, DRK	8	40.00	\$60.25
202002C	SF CAPSTRIP, 192", SIZE D, CLR	8	36.00	\$52.63
202002D	SF CAPSTRIP, 192", SIZE D, DRK	8	36.00	\$60.25
202003C	SF CAPSTRIP, 192", SIZE E, CLR	8	44.00	\$60.25
202003D	SF CAPSTRIP, 192", SIZE E, DRK	8	44.00	\$72.50
202004C	SF CAPSTRIP, 192", SIZE F, CLR	8	42.00	\$58.75
202004D	SF CAPSTRIP, 192", SIZE F, DRK	8	42.00	\$70.13
202005D	SF CAPSTRIP, 192", SIZE G, DRK	8	54.00	\$81.63
202006D	SF CAPSTRIP, 192", SIZE H, DRK	8	54.00	\$74.63
202007C	SF CAPSTRIP, 192", SIZE L, CLR	8	64.00	\$64.50
202007D	SF CAPSTRIP, 192", SIZE L, DRK	8	64.00	\$77.50
202008D	SF CAPSTRIP, 192", SIZE J, DRK	8	42.00	\$58.75

# Accessories

Prices and specifications are subject to change without notice.

Page

17

See also SOLAR**MOUNT-E** accessories on page 1.

## SUNFRAME

## CAP STRIP SCREWS

See page 16 for sizing.

CLR = Clear Anodized

DRK = Dark Bronze Anodized (BLACK)

Part No.	Description	Package Quantity	Ship Wt. Lbs.	List Price Ea.
209000C	SF CAP SCREW, 1/4 X 3/4" CLR	100	2.00	\$0.69
209000D	SF CAP SCREW, 1/4 X 3/4" DRK	100	2.00	\$0.93
209001C	SF CAP SCREW, 1/4 X 1", CLR	100	2.00	\$0.76
209001D	SF CAP SCREW, 1/4 X 1", DRK	100	2.00	\$1.01
209002C	SF CAP SCREW, 1/4 X 1.25", CLR	100	2.00	\$0.83
209002D	SF CAP SCREW, 1/4 X 1.25", DRK	100	2.00	\$1.08
209003C	SF CAP SCREW, 1/4 X 1.5", CLR	100	3.00	\$0.91
209003D	SF CAP SCREW, 1/4 X 1.5", DRK	100	3.00	\$1.14

## SUNFRAME L-FOOT ADJUSTING SLIDER

Mill finish. Includes 2 lag bolts with flat washers and s/s footing bolt with flange nut.

Part No.	Description	Package Quantity	Ship Wt. Lbs.	List Price Ea.
204001C	SF L-FOOT ADJUSTING SLIDER	20	18.00	\$15.15

## END CAP

UV resistant plastic, with matching screws.

Part No.	Description	Package Quantity	Ship Wt. Lbs.	List Price Ea.
202000D	SF END CAP, THREADED, DARK (BLACK) PLASTIC	20	1.00	\$3.40

Prices and specifications are subject to change without notice.



# MULTI-SOLUTION



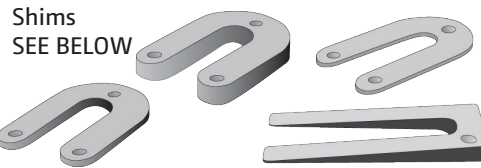
Wire Management Clips  
SEE BELOW

## Also Available:

- Standard Stainless Steel Fasteners and Washers - PAGE 20
- Security Hardware - PAGE 20



Cable ties  
SEE BELOW



Shims  
SEE BELOW

# MULTI-SOLUTION

## WIRE MANAGEMENT CLIPS

Stainless steel wire management clip that can be used with any module and Unirac mounting system.

Part No.	Description	Package Quantity	Ship Wt. Lbs.	List Price Ea.
008003S	ONE WIRE CLIP, SS	500	7.00	\$0.36
008004S	TWO WIRE CLIP, SS	500	7.00	\$0.40

## CABLE TIES AND SHIMS

Cable ties fit into 1/4 -inch holes drilled along rails.

Shims level or raise standoffs and L-feet and precisely align rails. Horseshoe shims come in three color-coded thicknesses. Our tapered shim is particularly useful in leveling.

Part No.	Description	Package Quantity	Ship Wt. Lbs.	List Price Ea.
309001D	PUSH MOUNT CABLE TIE BLK	100	1.00	\$0.30
009001D	SHIM 1 1/2" X 2" X 1/16, BLUE	20	1.00	\$0.50
009002D	SHIM 1 1/2" X 2" X 1/4, BLK	20	1.00	\$0.50
009003D	SHIM 1 1/2" X 2" X 1/8, RED	20	1.00	\$0.50
009004D	SHM 1.5"X3 3/8", TAPERED BLK	20	1.00	\$0.70

See also SOLAR**MOUNT-E** accessories on page 1.

Prices and specifications are subject to change without notice.

## MULTI-SOLUTION

**STANDARD FASTENERS AND WASHERS**

Avoid chasing fasteners after job-site drop. Frequent users can keep spares handy in their toolboxes.

CLR = Clear Finish

DRK = Dark (BLACK) Finish

ZN = Zinc

SS = Stainless Steel

Part No.	Description	Package Quantity	Ship Wt. Lbs.	List Price Ea.
330001C	T-BOLTS&NUTS, 1/4" X 2", CLR, SS	20	1.00	\$1.50
330002D	T-BOLTS&NUTS, 1/4" X 2", DRK, SS	20	1.00	\$1.75
330003C	T-BOLTS&NUTS, 1/4" X 2.5", CLR, SS	20	1.00	\$1.75
330004D	T-BOLTS&NUTS, 1/4" X 2.5", DRK, SS	20	1.00	\$2.00
030020C	FLAT WASHER, 5/16", CLR, SS	20	1.00	\$0.12
030023C	LAG BOLT, 5/16 X 3.5, ZN	24	1.00	\$0.82
330005S	3/8" BOLT HDWR L-FOOT	20	1.00	\$2.59
330006S	SPLICE BAR TEK SCREW	80	1.00	\$0.65
330007M	3/8" BOLT W/EPDM WASHER	24	1.00	\$3.40
030001S	SME TEK SCREW	40	1.00	\$2.79

**SECURITY HARDWARE**

Security hardware dramatically increases the difficulty and time required for a thief to dismantle a PV array and steal its components. Breakaway nuts work well in conjunction with top mounting clamps and footing bolts.

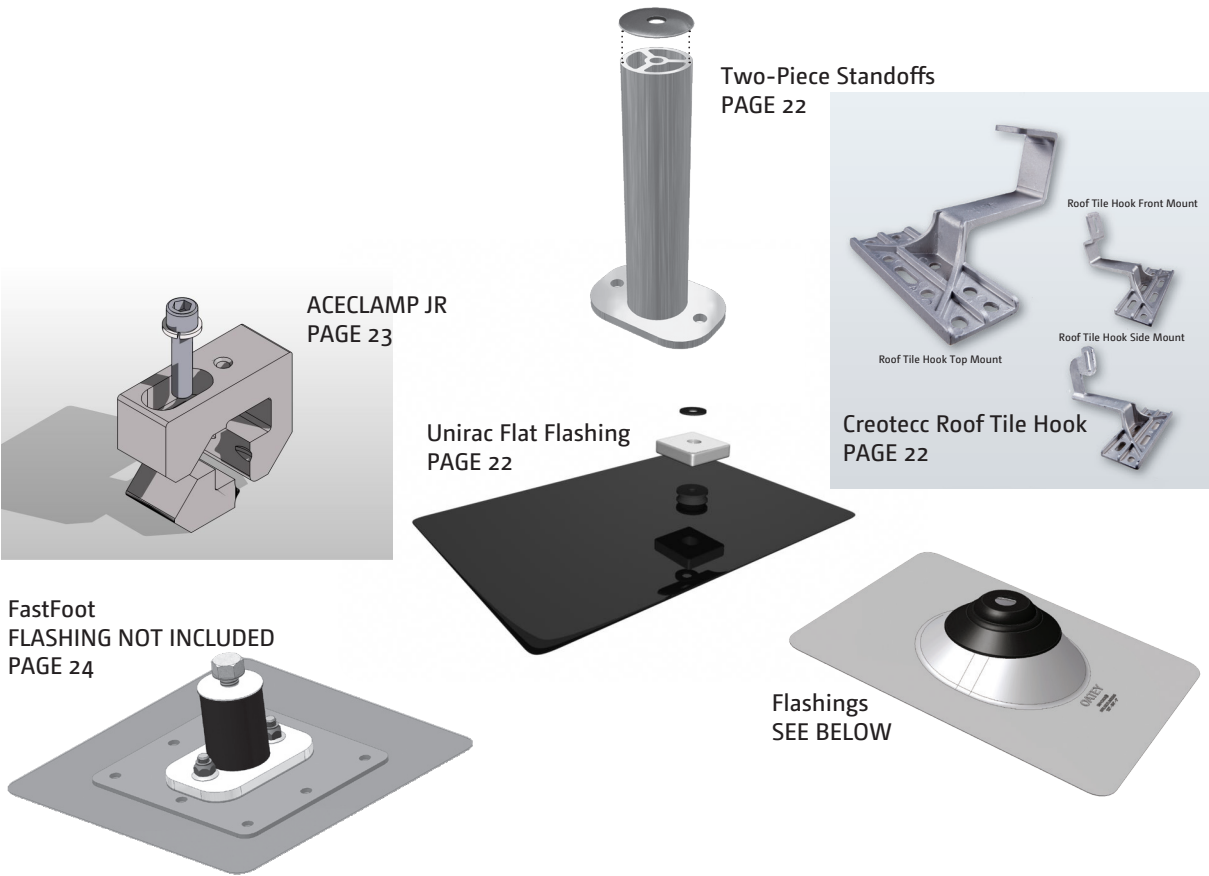
Note that starhead bolt heads do not fit into SolarMount rail slots (where standard bolt heads are inaccessible). Use them where heads are exposed—with bottom mounting module clips, for example.

Part No.	Description	Package Quantity	Ship Wt. Lbs.	List Price Ea.
030002C	HDW BREAKAWAY NUT, 3/8"-16, AL	20	1.00	\$1.65
030003C	HDW BREAKAWAY NUT, 1/4"-20, AL	20	1.00	\$1.25
030024C	HDW STAR BOLT, 3/8"-16X1 1/4"	20	1.00	\$3.60
030025C	HDW STAR KEY, 1/4",	1	1.00	\$19.61
030026C	HDW STAR KEY, 3/8",	1	1.00	\$23.63

See also SOLAR**MOUNT-E** accessories on page 1.

SOLAR**MOUNT**  
SOLAR**MOUNTi**  
SUN**FRAME**  
SOLAR**MOUNT-E**

Roof Attachments



**FLASHINGS**

Fits standoff O.D. of 1<sup>5</sup>/<sub>8</sub> inches.  
For pitched roofs up to 40 degrees. Not for hot mopped or built-up roofs  
No-Calk® collar  
By Oatey

Part No.	Description	Package Quantity	Ship Wt. Lbs.	List Price Ea.
004013C	FLASHING 18X18 SOFT ALUMINUM	12	11.00	\$12.00
004014C	FLASHING 12.5X8.75 GALVANIZED	12	9.00	\$6.40
004015C	FLASHING 12.5X8.75 ALUMINUM	12	12.00	\$8.70

Prices and specifications are subject to change without notice.

Page

# SOLARMOUNT

# SOLARMOUNTi

# SUNFRAME

# SOLARMOUNT-E

## UNIRAC FLAT FLASHING

Flashing, attached gasket, washer, and square aluminum plate ONLY! No lag bolt or rail attachment piece included.  
12" X 8"

Part No.	Description	Package Quantity	Ship Wt. Lbs.	List Price Ea.
004010D	UNIRAC FLAT FLASHING	48	21.00	\$14.00

## CREOTECC ROOF TILE HOOK

Creotecc roof tile hooks come in three different mount types. Front mount, side mount and top mount. For use with concrete tile or Spanish tile roofs.

Part No.	Description	Package Quantity	Ship Wt. Lbs.	List Price Ea.
004006C	TILE HOOK FRONT MOUNT, AL	20	20.00	\$32.50
004007C	TILE HOOK SIDE MOUNT, AL	20	20.00	\$28.50
004008C	TILE HOOK TOP MOUNT, AL	20	20.00	\$32.50

## TWO-PIECE STANDOFFS

Shaft outside diameter = 1<sup>5</sup>/<sub>8</sub> inches.  
Includes stainless steel hardware, EXCEPT roof mounting lag bolts.

CLR = Clear Finish  
DRK = Dark (BLACK) Finish

Part No.	Description	Package Quantity	Ship Wt. Lbs.	List Price Ea.
004300C	STANDOFF 3" - 2 PIECE ALUMINUM, CLR	24	15.00	\$11.82
004400C	STANDOFF 4" - 2 PIECE ALUMINUM, CLR	24	17.00	\$12.82
004600C	STANDOFF 6" - 2 PIECE ALUMINUM, CLR	24	21.00	\$14.90
004700C	STANDOFF 7" - 2 PIECE ALUMINUM, CLR	24	23.00	\$16.07
004300D	STANDOFF 3" - 2 PIECE ALUMINUM, DRK	24	15.00	\$12.40
004400D	STANDOFF 4" - 2 PIECE ALUMINUM, DRK	24	17.00	\$13.56
004600D	STANDOFF 6" - 2 PIECE ALUMINUM, DRK	24	21.00	\$15.65
004700D	STANDOFF 7" - 2 PIECE ALUMINUM, DRK	24	23.00	\$16.65

# SOLAR**MOUNT**

# SOLAR**MOUNTi**

# SUN**FRAME**

# SOLAR**MOUNT-E**

## ACECLAMP JR

Seamed Metal Roof Mounting Solution

ACECLAMP JR. 3/8" is used to attach SolarMount, SOLARMOUNTi, or SunFrame rail to standing seam metal roofs.

CLR = Clear Finish

DRK = Dark (BLACK) Finish

Part No.	Description	Package Quantity	Ship Wt. Lbs.	List Price Ea.
004031M	ACECLAMP JR. 3/8" MILL	100	35.00	\$18.30

## Roof Attachments

Prices and specifications are subject to change without notice.

Page

23

# SOLARMOUNT

# SOLARMOUNTi

# SUNFRAME

# SOLARMOUNT-E

## FASTFOOT HARDWARE AND ACCESSORIES

FastFoot DOES NOT INCLUDE flashings, DP1 concealer screws, DP4 concealer screws, anchors or ferrules - available below, separately.

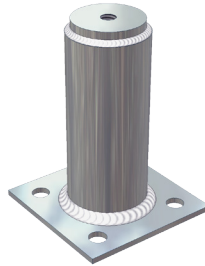
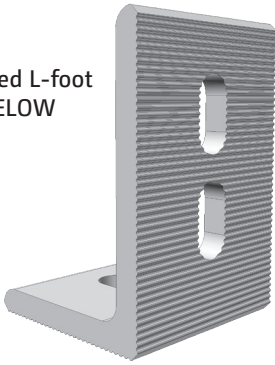
Part No.	Description	Package Quantity	Ship Wt. Lbs.	List Price Ea.
004003C	FAST FOOT 3" ASSEMBLY	20	35.00	\$45.25
004004C	FAST FOOT 4" ASSEMBLY	20	37.00	\$45.75
004005C	FAST FOOT 7" ASSEMBLY	20	42.00	\$46.95
004012C	FLASHING #1 GALVALUME	50	1.00	\$6.89
004017D	FLASHING PEEL & STICK EPDM BLK	50	1.00	\$7.02
030001C	ANCHORS, #14	20	6.00	\$0.68
030004C	CONCEALER SCREW 1.5", DP1	100	5.00	\$0.25
030005C	CONCEALER SCREW 2", DP1	100	5.00	\$0.28
030006C	CONCEALER SCREW 2.75", DP4	100	5.00	\$0.56
030007C	CONCEALER SCREW 3", DP1	100	5.00	\$0.36
030008C	CONCEALER SCREW 3.75", DP4	100	5.00	\$0.62
030009C	CONCEALER SCREW 1.375", DP4	100	5.00	\$0.54
030010C	CONCEALER SCREW 4", DP1	100	5.00	\$0.44
030011C	CONCEALER SCREW 4.5", DP1	100	5.00	\$0.51
030012C	CONCEALER SCREW 4.75", DP4	100	5.00	\$0.75
030013C	CONCEALER SCREW 5", DP1	100	5.00	\$0.57
030014C	CONCEALER SCREW 5.75", DP4	100	5.00	\$0.81
030015C	CONCEALER SCREW 6", DP1	100	5.00	\$0.69
030016C	CONCEALER SCREW 6.75", DP4	100	5.00	\$0.87
030017C	CONCEALER SCREW 7", DP1	100	5.00	\$0.79
030018C	CONCEALER SCREW 7.75", DP4	100	5.00	\$0.95
030019C	FERRULES 48"	20	1.00	\$23.63

Prices and specifications are subject to change without notice.



# SOLARMOUNT SUNFRAME

Serrated L-foot  
SEE BELOW



Flattop (one-piece) and Flanged Standoffs  
PAGE 26

TWO-PIECE STANDOFFS AVAILABLE ON PAGE 22.

# SOLARMOUNT SUNFRAME

## SERRATED L-FOOT

Select finish to match rails. Includes stainless steel bolts and flange nuts. Lag bolts are not included.

CLR = Clear Anodized

DRK = Dark Bronze Anodized (BLACK)

Part No.	Description	Package Quantity	Ship Wt. Lbs.	List Price Ea.
304000C	SM L-FOOT SERRATED W/HDW, CLR	20	5.00	\$4.34
304000D	SM L-FOOT SERRATED W/HDW, DRK	20	5.00	\$4.54

Prices and specifications are subject to change without notice.

# SOLARMOUNT SUNFRAME

## FLATTOP (ONE-PIECE) AND FLANGED STANDOFFS

O.D. of 1<sup>5</sup>/<sub>8</sub> inches.

Aluminum or zinc-plated steel

TWO-PIECE STANDOFFS AVAILABLE ON PAGE 22.

CLR = Clear Anodized

DRK = Dark Bronze Anodized (BLACK)

**NOTE: Fasteners not included. See page 20.**

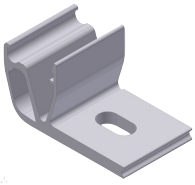
Part No.	Description	Package Quantity	Ship Wt. Lbs.	List Price Ea.
004301G	STANDOFF 3" FLATTOP STEEL	24	27.00	\$18.08
004302G	STANDOFF 3" RAISED FLANGE STEEL	24	28.00	\$18.72
004401G	STANDOFF 4" FLATTOP STEEL	24	31.00	\$18.97
004402G	STANDOFF 4" RAISED FLANGE STEEL	24	32.00	\$20.78
004601G	STANDOFF 6" FLATTOP STEEL	24	40.00	\$19.69
004602G	STANDOFF 6" RAISED FLANGE STEEL	24	42.00	\$22.22
004701G	STANDOFF 7" FLATTOP STEEL	24	44.00	\$22.33
004702G	STANDOFF 7" RAISED FLANGE STEEL	24	46.00	\$24.00

Prices and specifications are subject to change without notice.

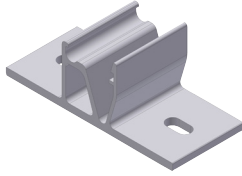
Page

26

# SOLARMOUNTi



One Flange Connector  
SEE BELOW



Two Flange Connector  
SEE BELOW

## Also Available:

- QuickMount Flashing  
SEE BELOW

# SOLARMOUNTi SOLARMOUNT-E

## SOLARMOUNTi AND SOLARMOUNT-E CONNECTOR

One and Two Flange Connectors

Two Flange Connection available with or without butyl

Note: SOLARMOUNT-E uses ONLY the 1 Flange Connector

**NOTE:** Screws, lag bolts, etc. NOT INCLUDED. See Page 20.

Part No.	Description	Package Quantity	Ship Wt. Lbs.	List Price Ea.
004000M	SM-I & SME 1 FLANGE CONNECTOR	20	4.00	\$7.23
004001M	SM-I 2 FLANGE CONNECTOR	20	4.00	\$7.94
004002C	SM-I 2 FLANGE CONNECTOR & BUTYL	20	5.00	\$8.94

## QUICKMOUNT FLASHING

Aluminum

CLR = Clear

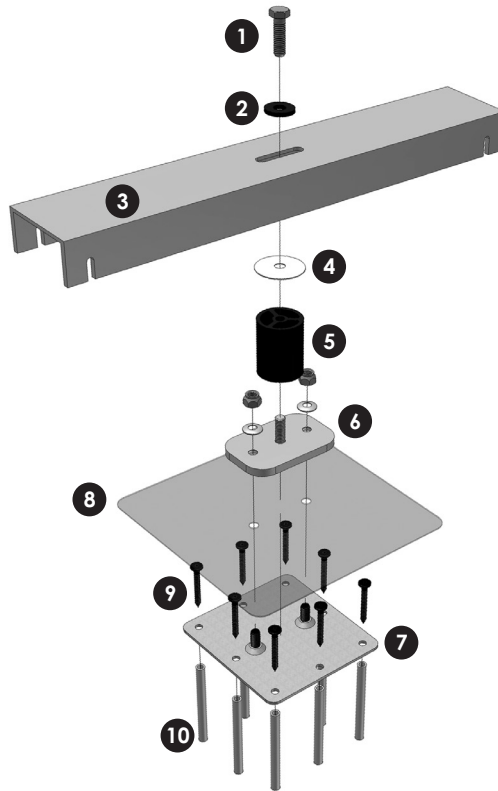
DRK = Black

**NOTE:** Screws, lag bolts, connector hardware, etc. NOT INCLUDED. See page 20.

Part No.	Description	Package Quantity	Ship Wt. Lbs.	List Price Ea.
004011C	QUICKMOUNT FLASHING 9.5X12.5 CLR	18	13.00	\$30.00
004011D	QUICKMOUNT FLASHING 9.5X12.5 DRK	18	13.00	\$31.61

Prices and specifications are subject to change without notice.

## RAPIDRAC G10



### RapidFoot:

1. 3/8" x 1-1/4" Bolt
2. 3/8" x 1/8" x 1-1/2" Washer
3. Clamp Bar
4. EPDM Washer
5. Standoff
6. Top Plate
7. Base Plate

### Accessories (sold separately):

8. Flashing
9. Concealer Screw
10. Ferrules

(Note: For concrete roofs, Scru-lead anchors must be used.)

RAPIDFOOT HARDWARE AND  
ACCESSORIES  
PAGE 29

Prices and  
specifications are  
subject to change  
without notice.

Page

28

# RAPIDRAC G10

## RAPIDFOOT HARDWARE AND ACCESSORIES

RapidFoot DOES NOT INCLUDE flashings, DP1 concealer screws, DP4 concealer screws, anchors or ferrules - available below, separately.

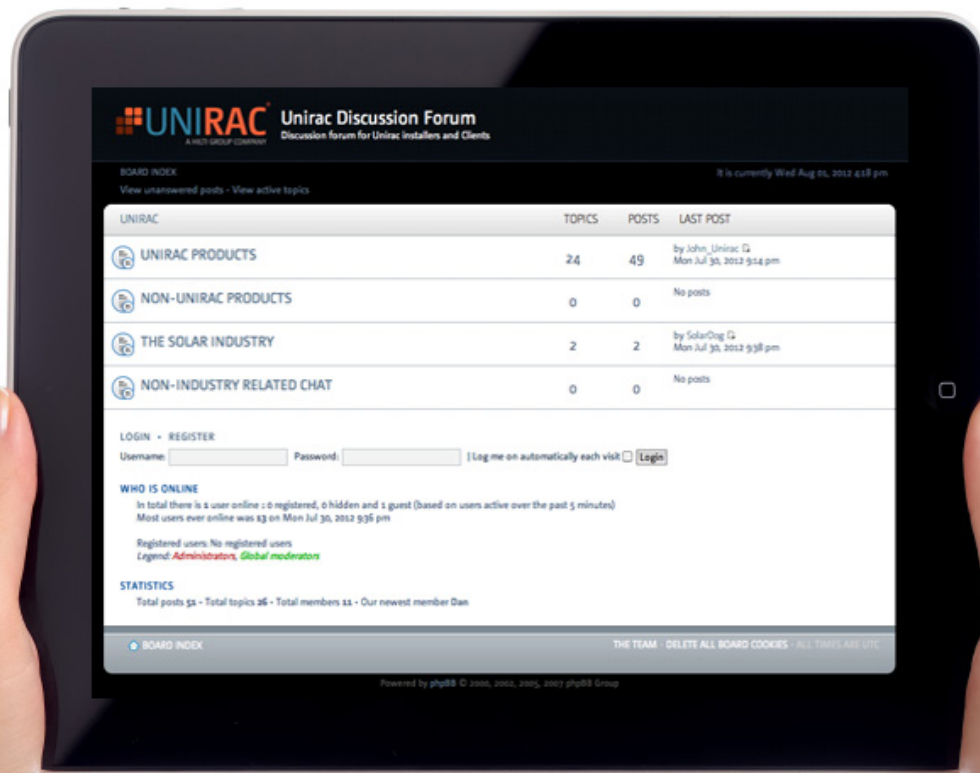
Part No.	Description	Package Quantity	Ship Wt. Lbs.	List Price Ea.
622069C	RAPIDFOOT ASSEMBLY	1	20.00	\$55.00
004012C	FLASHING #1 GALVALUME	50	26.00	\$6.89
004017D	FLASHING PEEL & STICK EPDM BLK	50	23.00	\$7.02
030001C	ANCHORS, #14	20	1.00	\$0.68
030004C	CONCEALER SCREW 1.5", DP1	100	2.00	\$0.25
030005C	CONCEALER SCREW 2", DP1	100	2.00	\$0.28
030006C	CONCEALER SCREW 2.75", DP4	100	3.00	\$0.56
030007C	CONCEALER SCREW 3", DP1	100	3.00	\$0.36
030008C	CONCEALER SCREW 3.75", DP4	100	3.00	\$0.62
030009C	CONCEALER SCREW 1.375", DP4	100	2.00	\$0.54
030010C	CONCEALER SCREW 4", DP1	100	5.00	\$0.44
030011C	CONCEALER SCREW 4.5", DP1	100	5.00	\$0.51
030012C	CONCEALER SCREW 4.75", DP4	100	5.00	\$0.75
030013C	CONCEALER SCREW 5", DP1	100	5.00	\$0.57
030014C	CONCEALER SCREW 5.75", DP4	100	5.00	\$0.81
030015C	CONCEALER SCREW 6", DP1	100	5.00	\$0.69
030016C	CONCEALER SCREW 6.75", DP4	100	5.00	\$0.87
030017C	CONCEALER SCREW 7", DP1	100	6.00	\$0.79
030018C	CONCEALER SCREW 7.75", DP4	100	6.00	\$0.95
030019C	FERRULES 48"	20	2.00	\$23.63

## Roof Attachments

Prices and specifications are subject to change without notice.

Page

29



Join us on the

# Unirac Discussion Forum

<http://forum.unirac.com>